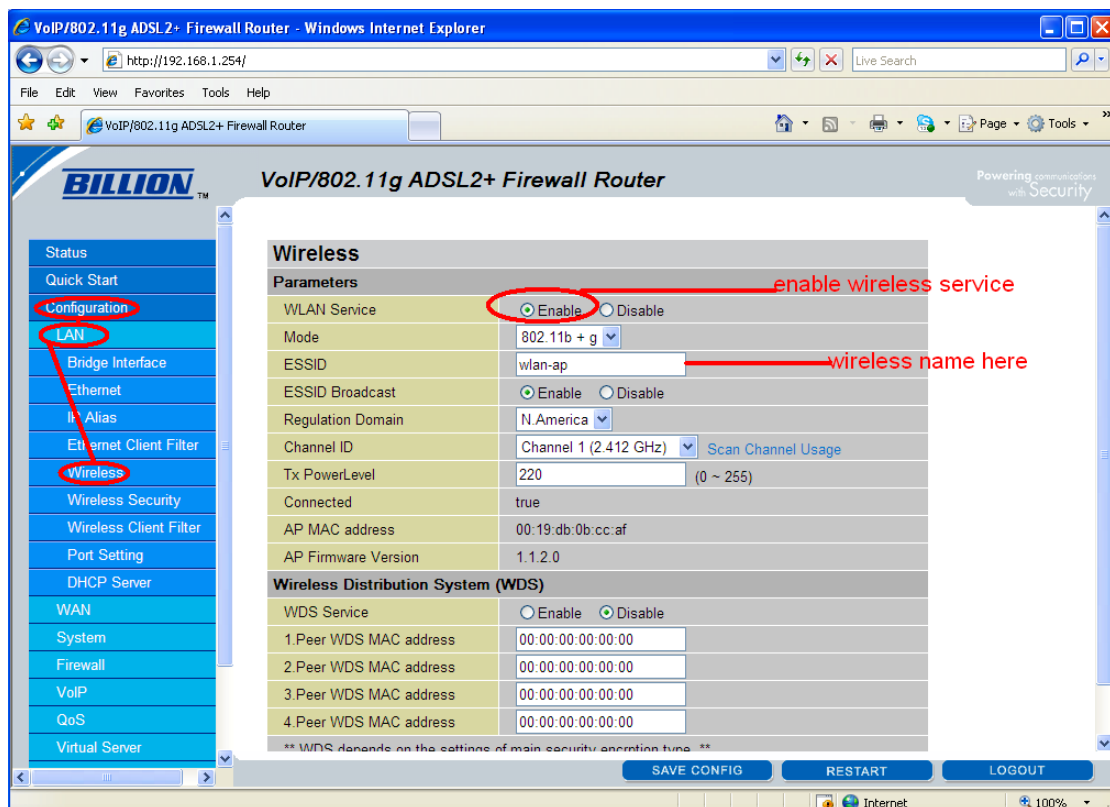


## Enabling Wireless Security: Billion Modem

### 1. Enable Wireless

- Steps (see diagram below):
- Open web browser
  - Enter <http://192.168.1.254> in address bar (username: admin / password: admin)
  - Go to '**Configuration**' / '**LAN**' / '**Wireless**'
  - Select '**Enable**' for 'WLAN Service' field
  - Click '**Save Config**'

NOTE: the **ESSID** is the identifying name of a wireless network (or, technically, the identifying name of a wireless access point)



## 2. Enable Wireless Security

- Steps (see diagram below):
- Open web browser
  - Enter <http://192.168.1.254> in address bar (username: admin / password: admin)
  - Go to '**Configuration**' / '**LAN**' / '**Wireless Security**'
  - Select '**WPA2-PSK**' for 'Security Mode' field
  - Enter wireless code in 'Pre-Shared Key' field
  - Click '**Apply**'
  - Click '**Save Config**'
  - Click '**Restart**'

