

BiPAC 6404VP/VGP

**VoIP/(802.11g) Broadband Firewall
Router**

Quick Start Guide



For more detailed instructions on configuring and using the VoIP/(802.11g) Broadband Firewall Router, please refer to the on-line manual.

Package Contents

- VoIP/(802.11g) Broadband Firewall Router
- CD-ROM containing the online manual
- Ethernet (CAT-5 LAN) Cable
- Console Kit (RJ45-RS232)
- AC-DC power adapter (BiPAC 6404VP - 12V DC, 1A) (BiPAC 6404VGP – 12V DC 1.2A)
- This Quick Start Guide



Warning

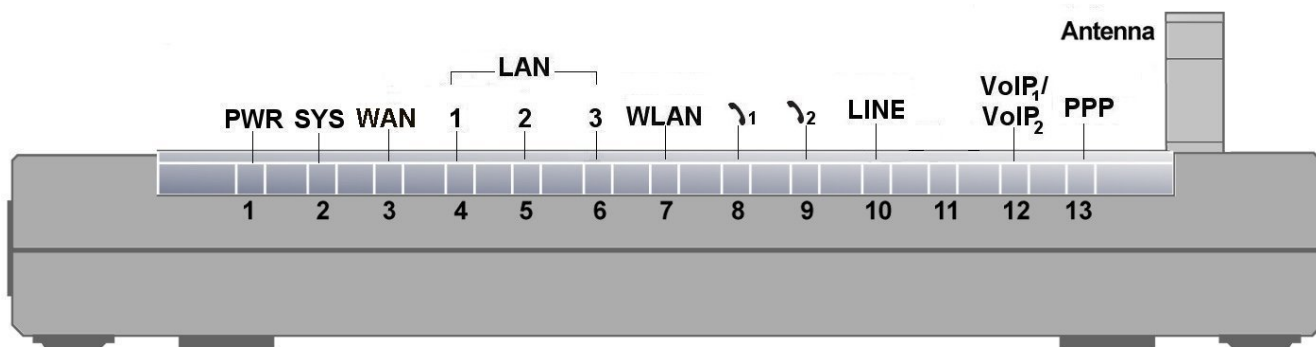
- ✓ Do not use this router in high humidity or high temperatures.
- ✓ Do not use the same power source for this router as other equipment.
- ✓ Do not open or repair the case yourself. If this router is too hot, turn off the power immediately and have it repaired at a qualified service center.
- ✓ Avoid using this product and all accessories outdoors.



Attention

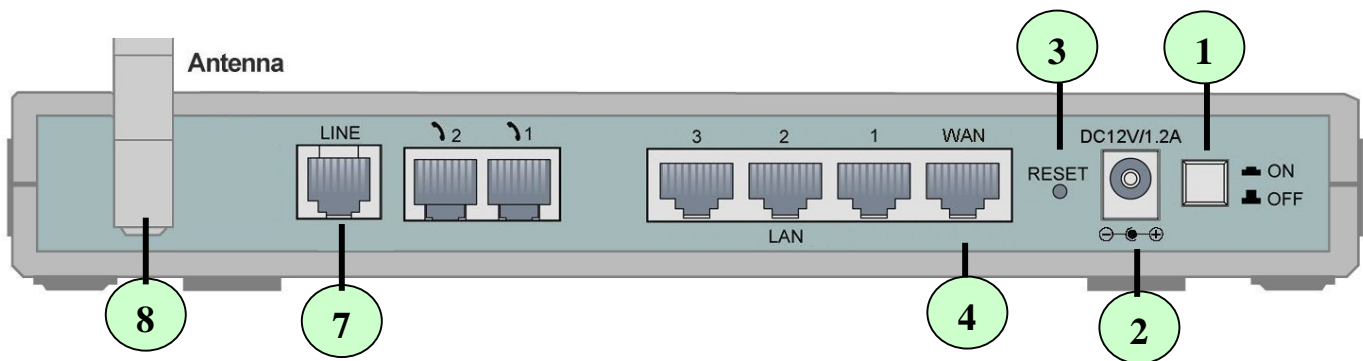
- ✓ Place this router on a stable surface.
- ✓ Only use the power adapter that comes with the package. Using a different voltage rating power adaptor may damage this router.

The Front LEDs



LED		Meaning
1	PWR	Lit when power is ON.
2	SYS	Lit when the system is ready.
3	WAN	Lit when connected to an ADSL modem or Cable modem's Ethernet port well
4 – 6	LAN Port 1X — 3X (RJ-45 connector)	Lit when connected to an Ethernet device. Green for 100Mbps; Orange for 10Mbps. Blinking when data is Transmitted / Received.
7	WLAN <i>(Wireless Router only)</i>	Lit green when the wireless connection is established. Flashes when sending/receiving data.
8 – 9	Phone 1X — 2X (RJ-11 connector)	Lit green when the phone is off-hook.
10	LINE	Lit when the inbound and outbound calls transmitted through PSTN.
12	VoIP Port 1X — 2X (RJ-11 connector)	Lit when the SIP Registration is OK. Green for Phone 1; Orange for Phone 2.
13	PPP	Lit Green when there is a PPPoA / PPPoE connection.

The Rear Ports



NOTE:


The LAN 3 can be connected to the computer and console cable. You need a special console kit in this package to connect the LAN cable of Port 3 when connecting to a PC's RS-232 port (9-pin serial port).

Port		Meaning
1	Power Switch	Power ON/OFF switch
2	PWR	Connect the supplied power adapter to this jack.
3	RESET	After the device is powered on, press it to reset the device or restore to factory default settings. 1-3 seconds: reset the device 6 seconds above, and power off, power on the device: restore to factory default settings (this is used when you can not login to the router, e.g. forgot the password)
4	WAN	WAN 10/100M Ethernet port (with auto crossover support); connect xDSL/Cable modem here.
5	LAN 1X — 3X (RJ-45 connector)	Connect a UTP Ethernet cable (Cat-5 or Cat-5e) to one of the three LAN ports when connecting to a PC or an office/home network of 10Mbps or 100Mbps.
6	Phone 1X — 2X (RJ-11 connector)	Connect RJ-11 cable to this port when connecting to an analog phone set.
7	LINE	Connect RJ-11 cable to this port when connecting to the telephone wall jack.
8	Antenna (Wireless Router only)	Connect the detachable antenna to this port.

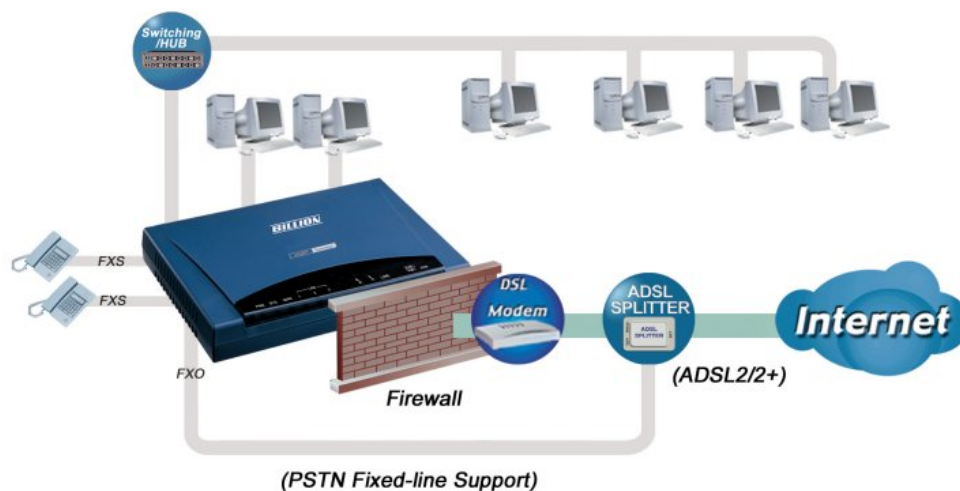
Connecting Your Broadband Router

1. (a) **ATA Mode:** Connect the ATA to a **WAN** (Connect to ADSL modem/router).
(b) **Broadband Router Mode:** Connect the Router to a **LAN** (Local Area Network) and **WAN** (Connect to Cable or ADSL modem).
2. Power on the device.
3. Make sure the **PWR** and **SYS** LEDs are lit steadily and that the **WAN** and relevant **LAN** LED are lit.
4. Connect an RJ11 cable to VoIP port when connecting to an analog phone set.
5. Connect RJ-11 cable to LINE Port when connecting to the telephone wall jack

ATA Mode

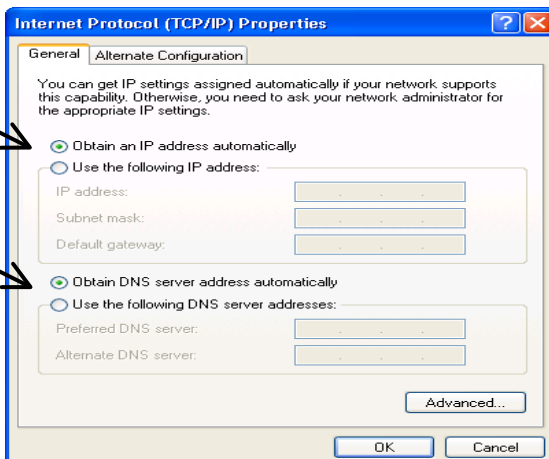
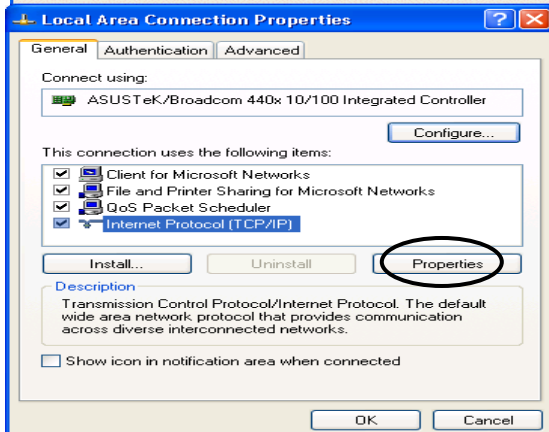
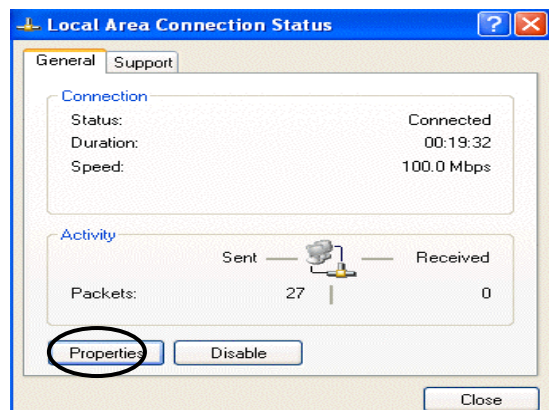
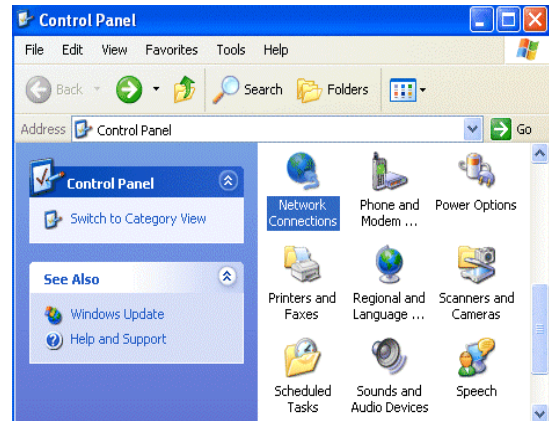


Broadband Router Mode



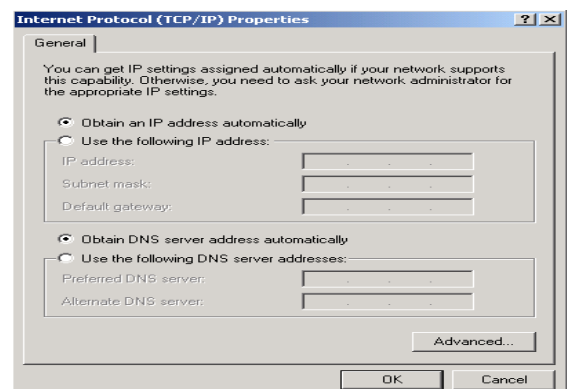
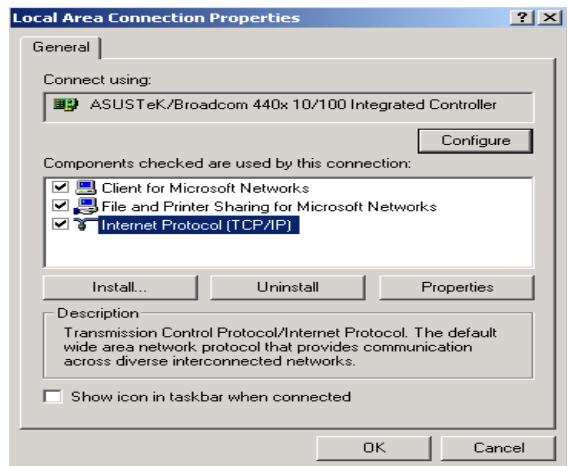
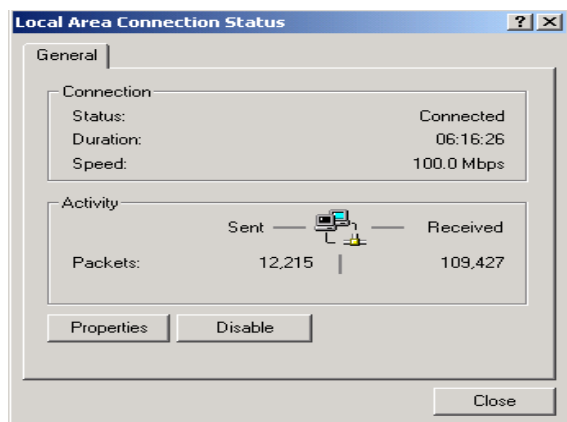
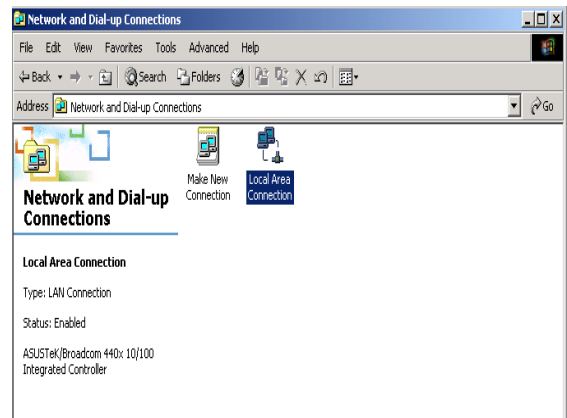
Configuring PC in Windows XP

1. Go to **Start / Control Panel (in Classic View)**. In the Control Panel, double-click on **Network Connections**
2. Double-click **Local Area Connection**.
3. In the **Local Area Connection Status** window, click **Properties**.
4. Select **Internet Protocol (TCP/IP)** and click **Properties**.
5. Select the **Obtain an IP address automatically** and the **Obtain DNS server address automatically** radio buttons.
6. Click **OK** to finish the configuration.



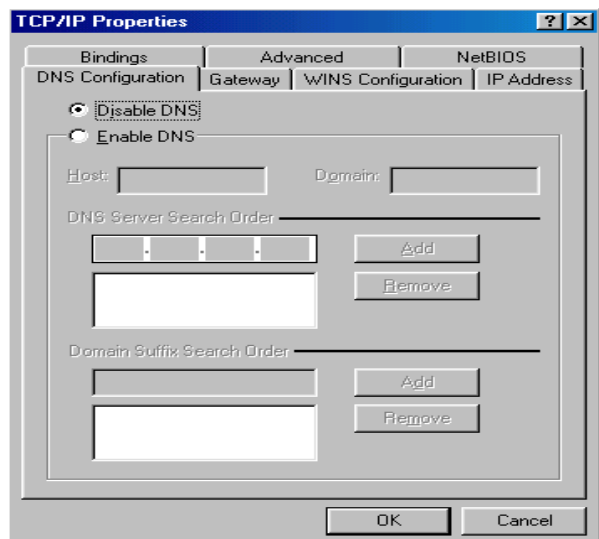
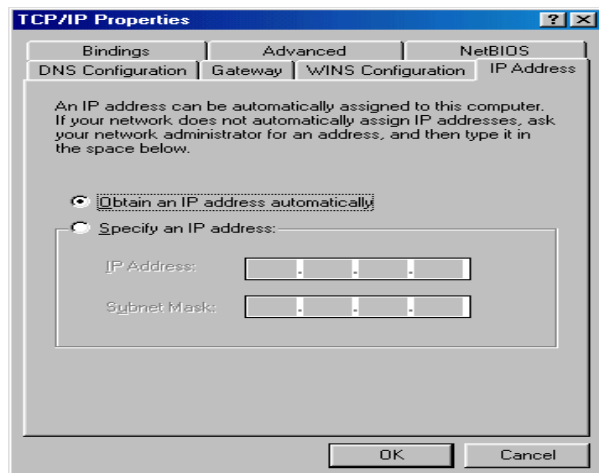
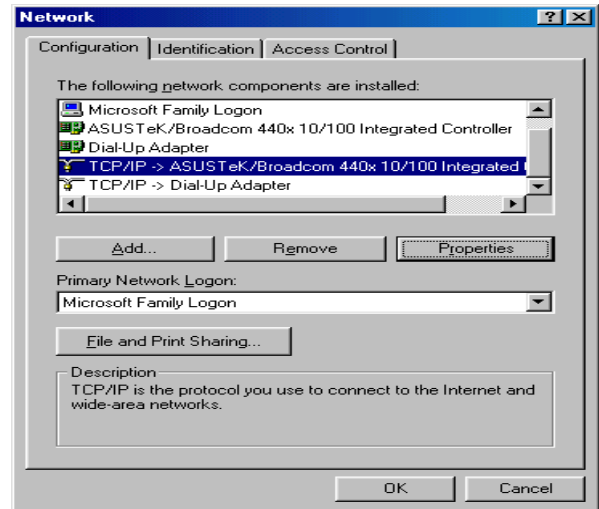
Configuring PC in Windows 2000

1. Go to **Start / Settings / Control Panel**. In the Control Panel, double-click on **Network and Dial-up Connections**.
2. Double-click **Local Area Connection**.
3. In the **Local Area Connection Status** window click **Properties**.
4. Select **Internet Protocol (TCP/IP)** and click **Properties**.
5. Select the **Obtain an IP address automatically** and the **Obtain DNS server address automatically** radio buttons.
6. Click **OK** to finish the configuration.



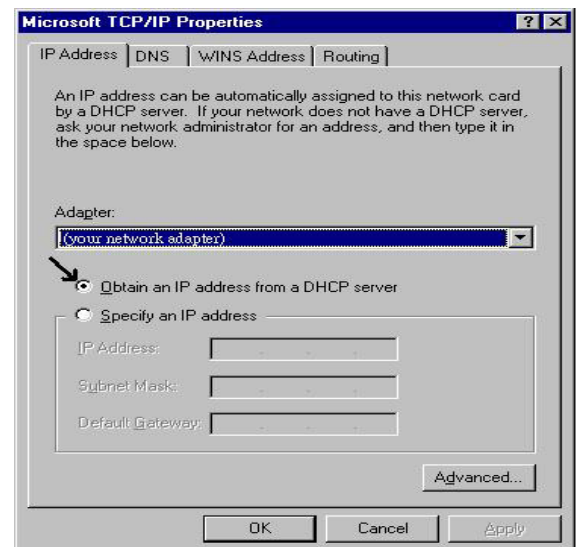
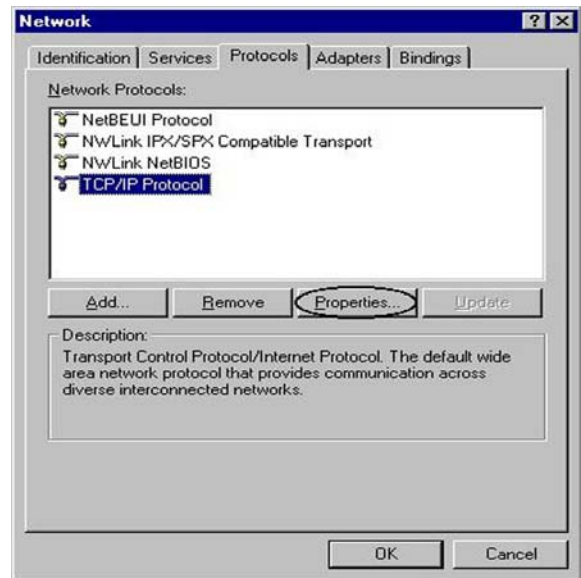
Configuring PC in Windows 98/Me

1. Go to **Start / Settings / Control Panel**. In the Control Panel, double-click on **Network** and choose the **Configuration** tab.
2. Select **TCP/IP -> NE2000 Compatible**, or the name of your Network Interface Card (NIC) in your PC.
3. Select the **Obtain an IP address automatically** radio button.
4. Then select the **DNS Configuration** tab.
5. Select the **Disable DNS** radio button and click **OK** to finish the configuration.



Configuring PC in Windows NT4.0

1. Go to **Start / Settings / Control Panel**. In the Control Panel, double-click on **Network** and choose the **Protocols** tab.
2. Select **TCP/IP Protocol** and click **Properties**.
3. Select the **Obtain an IP address from a DHCP server** radio button and click **OK**.



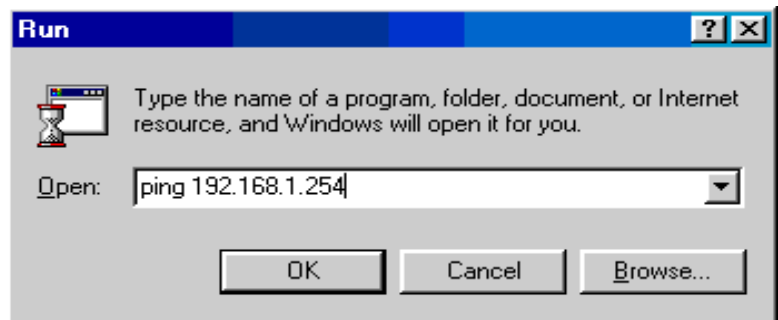
Configuring Your Broadband Router



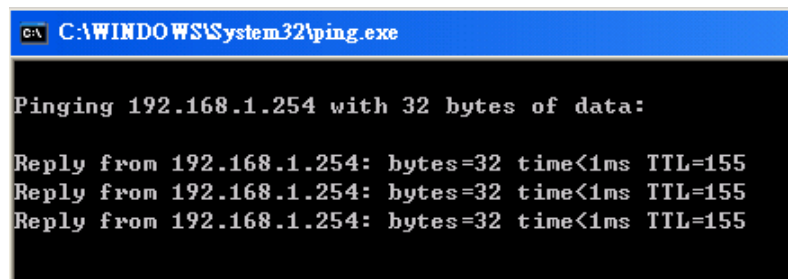
To configure this device, you must have IE 5.0 / Netscape 4.5 or above installed

■ Verifying Your Local Network Connection with the Device

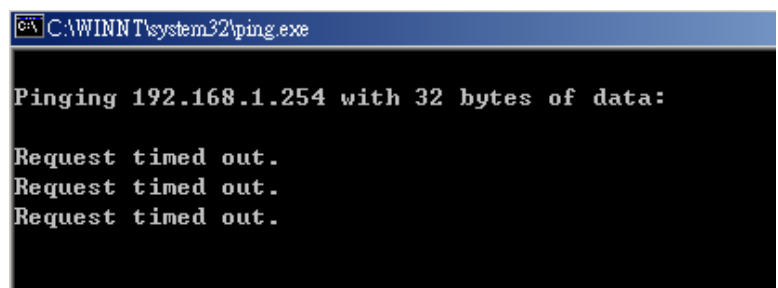
To see if this Router is visible on the local network, go to **Start / Run**. In the Run dialog box, type “**ping 192.168.1.254**” then press **OK**.



A command prompt window will pop out. If your ping is successful which means your local network is able to reach to the device, then the command prompt window will close up automatically.

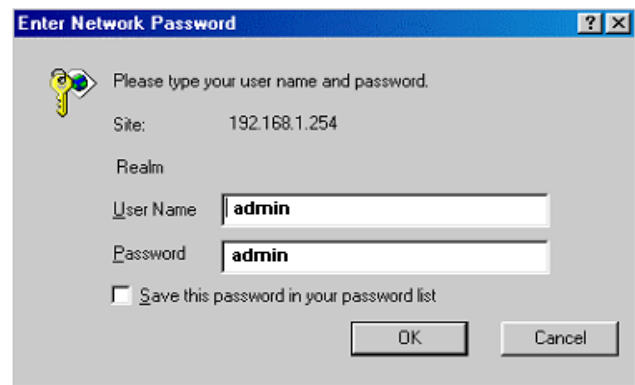
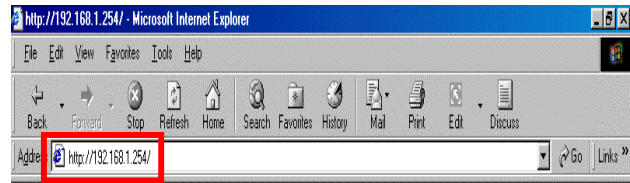


Connection fails, when you see “**Request timed out**” in the command prompt window. You may need to check your set up.



■ Connecting to the Router

1. Open the web browser and type <http://192.168.1.254> in the browser's address box. This number is the default IP address for this router. Press **Enter**.
2. A username and password window will appear. **The default username and password are admin and admin.** Press **OK** to proceed.



Product Support and Contact Information

Most problems can be solved by referring to the **Troubleshooting** section in the User's Manual. If you cannot resolve the problem with the **Troubleshooting** chapter, please contact the dealer where you purchased this product.

Contact Billion

AUSTRALIA

<http://www.billion.com.au>

©2006 Billion Electric Co Ltd., PC Range P/L. All Rights Reserved.

WORLDWIDE

<http://www.billion.com>

Mac OS is a registered Trademark of Apple Computer, Inc.
Windows 98, Windows NT, Windows 2000, Windows Me and Windows XP are registered Trademarks of Microsoft Corporation.