

BiPAC 7401VP/VGP

VoIP/(802.11g) ADSL2+ Router

Quick Start Guide



For more detailed instructions on configuring and using the Billion VoIP/(802.11g) ADSL2+ Router, please refer to the on-line manual.

Package Contents

- VoIP/(802.11g) ADSL2+ Router
- CD-ROM containing the user manual
- RJ-11 ADSL/telephone Cable
- Ethernet (CAT-5 LAN) Cable
- Console tool
- A detachable Antenna (Wireless router only)
- AC-DC power adapter (12VDC, 1A)
- This Quick Start Guide



Warning

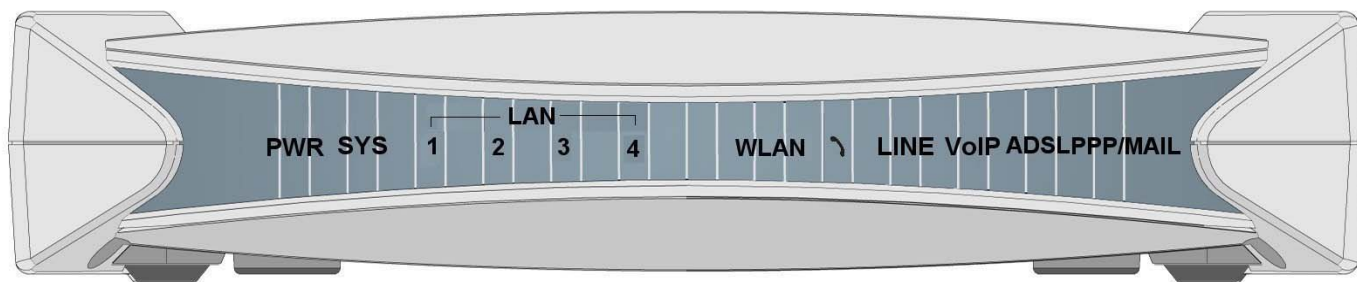
- ✓ Do not use this router in high humidity or high temperatures.
- ✓ Do not use the same power source for this router as other equipment.
- ✓ Do not open or repair the case yourself. If this router is too hot, turn off the power immediately and have it repaired at a qualified service center.
- ✓ Avoid using this product and all accessories outdoors.



Attention

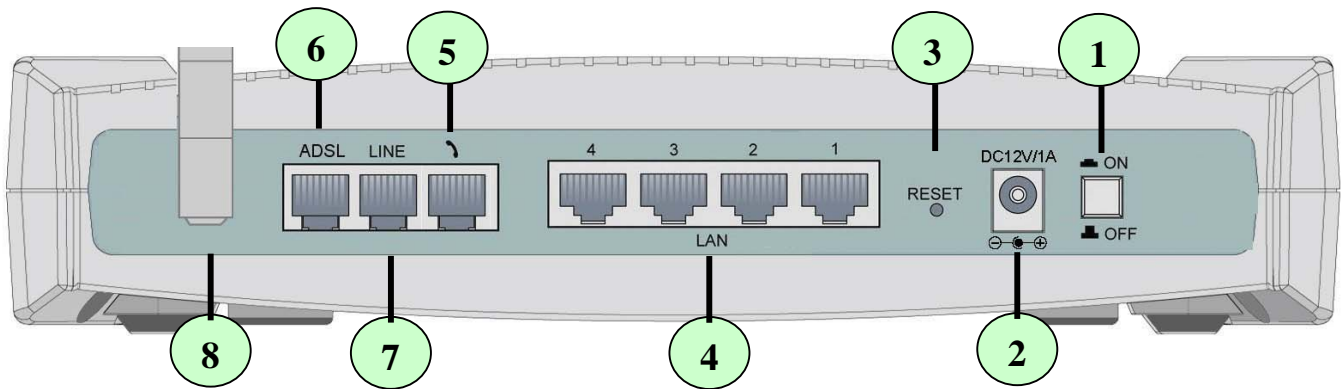
- ✓ Place this router on a stable surface.
- ✓ Only use the power adapter that comes with the package. Using a different voltage rating power adaptor may damage this router.

The Front LEDs



LED		Meaning
1	PWR	Lit when power is ON.
2	SYS	Lit when the system is ready.
3 – 6	LAN Port 1X — 4X (RJ-45 connector)	Lit when connected to an Ethernet device. Green for 100Mbps; Orange for 10Mbps. Blinking when data is Transmitted / Received.
8	WLAN (Wireless router only)	Lit green when the wireless connection is established. Flashes when sending/receiving data.
9	Phone (RJ-11 connector)	Lit green when the phone is off-hook.
10	LINE	Lit when the inbound and outbound calls transmitted through PSTN.
11	VoIP	Lit when SIP registration is OK.
12	ADSL	Lit when successfully connected to an ADSL DSLAM (“linesync”).
13	PPP / MAIL	Lit steady when there is a PPPoA / PPPoE connection. Lit and flashed periodically when there is email in the Inbox.

The Rear Ports



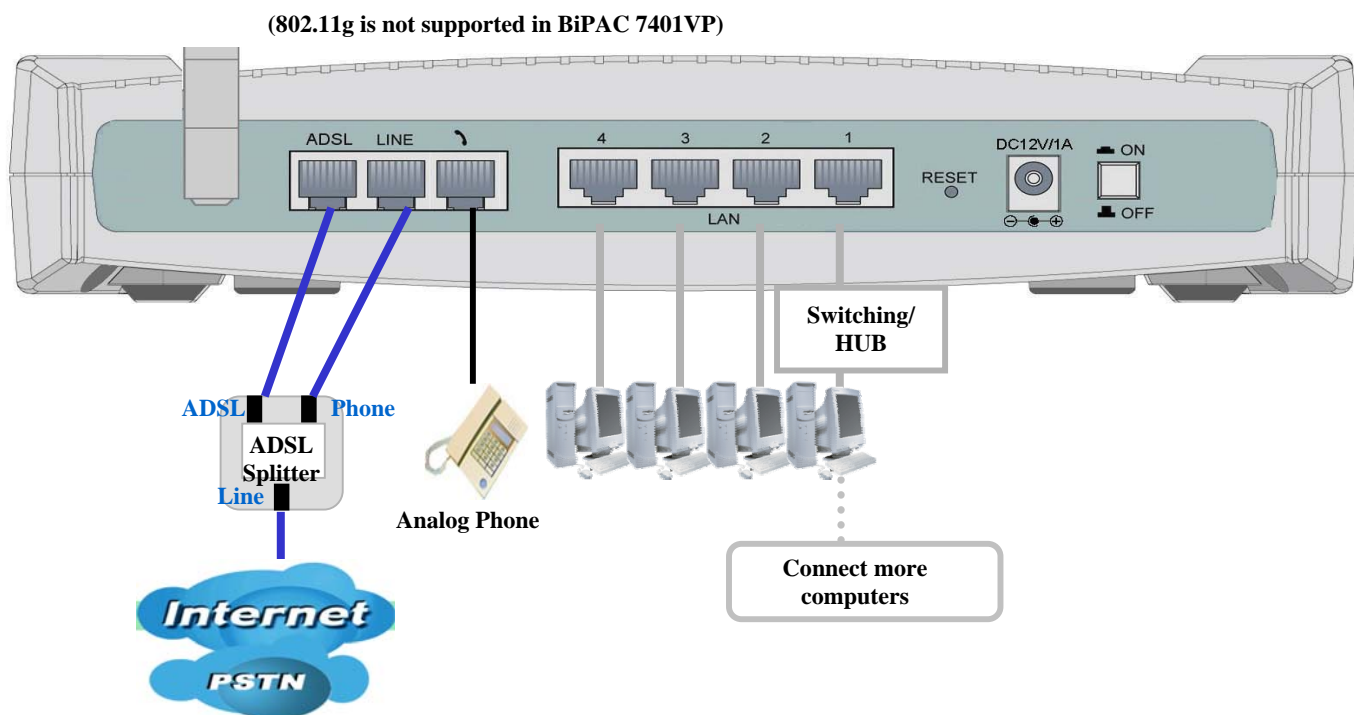
NOTE:


The Ethernet Port # 4 can be connected to the computer and console. You need a special console tool which is included in this package to connect the LAN cable of Port 4 when connecting to a PC's RS-232 port (9-pin serial port).

Port		Meaning
1	Power Switch	Power ON/OFF switch
2	Power	Connect the supplied power adapter to this jack.
3	RESET	After the device is powered on, press it to reset the device or restore to factory default settings. 1-3 seconds: reset the device 6 seconds above, and power off, power on the device: restore to factory default settings (this is used when you can not login to the router, e.g. forgot the password)
4	LAN 1X — 4X (RJ-45 connector)	Connect a UTP Ethernet cable (Cat-5 or Cat-5e) to one of the four LAN ports when connecting to a PC or an office/home network of 10Mbps or 100Mbps.
5	Phone (RJ-11 connector)	Connect RJ-11 cable to this port when connecting to an analog phone set.
6	LINE	Connect RJ-11 cable to this port when connecting to the telephone wall jack.
7	ADSL	Connect the supplied RJ-11 ("telephone") cable to this port when connecting to the ADSL/telephone network.
8	Antenna (Wireless router only)	Connect the detachable antenna to this port.

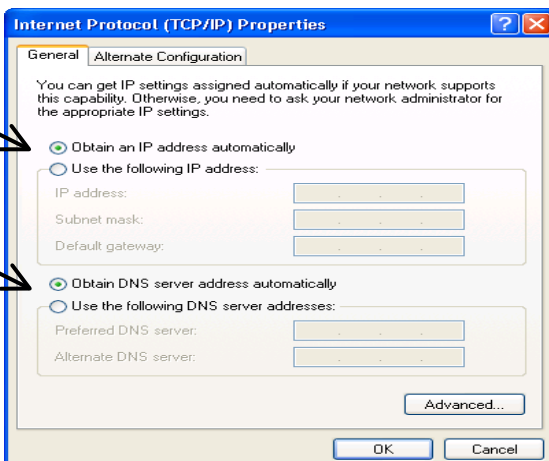
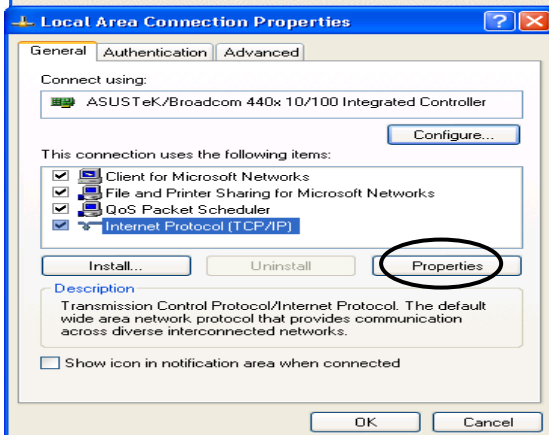
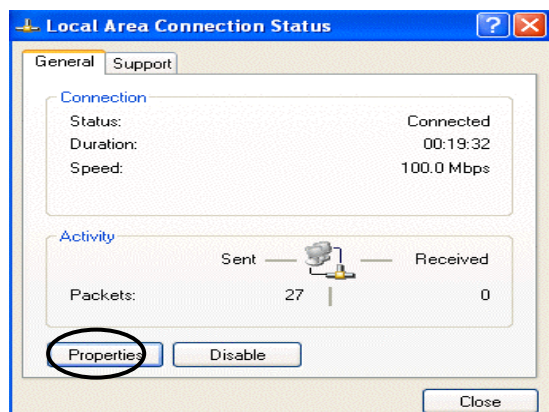
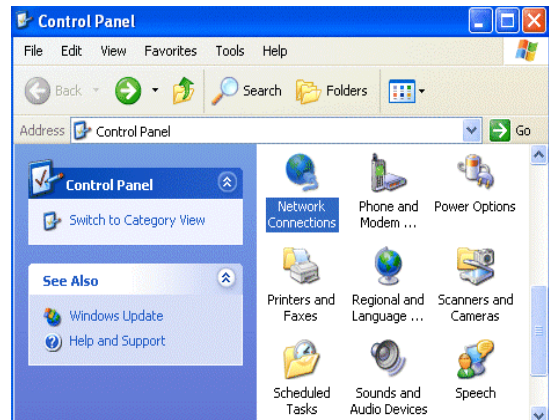
Connecting Your ADSL Router

1. Connect this router to a LAN (Local Area Network) and the ADSL/telephone (**ADSL**) network.
2. Power on the device.
3. Make sure the **PWR** and **SYS** LEDs are lit steadily and that the **LAN** LED is lit.
4. Connect an RJ11 cable to VoIP port when connecting to an analog phone set.
5. Connect RJ-11 cable to LINE Port when connecting to the telephone wall jack.



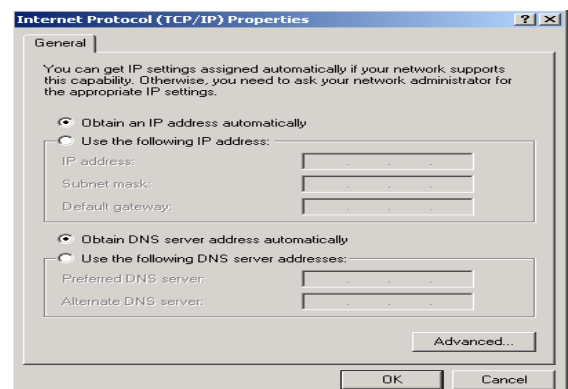
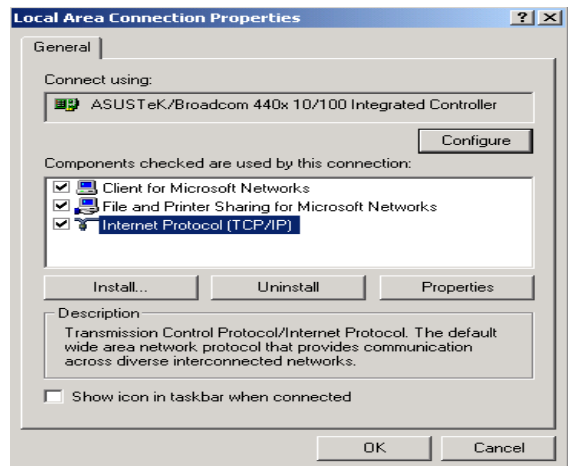
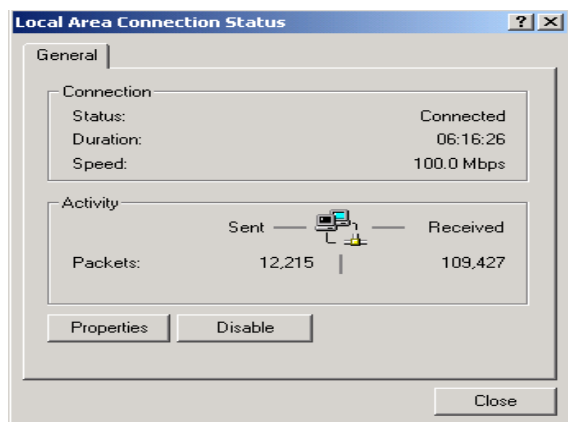
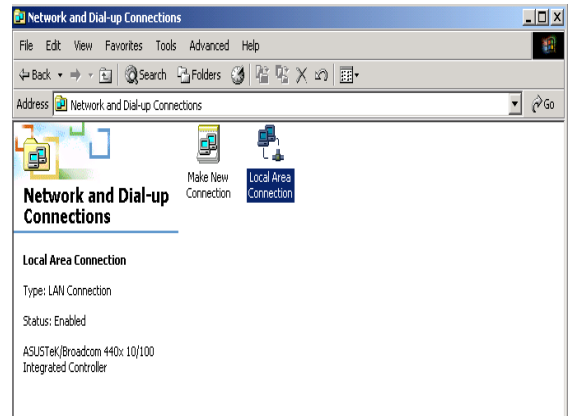
Configuring PC in Windows XP

1. Go to **Start / Control Panel (in Classic View)**. In the Control Panel, double-click on **Network Connections**
2. Double-click **Local Area Connection**.
3. In the **Local Area Connection Status** window, click **Properties**.
4. Select **Internet Protocol (TCP/IP)** and click **Properties**.
5. Select the **Obtain an IP address automatically** and the **Obtain DNS server address automatically** radio buttons.
6. Click **OK** to finish the configuration.



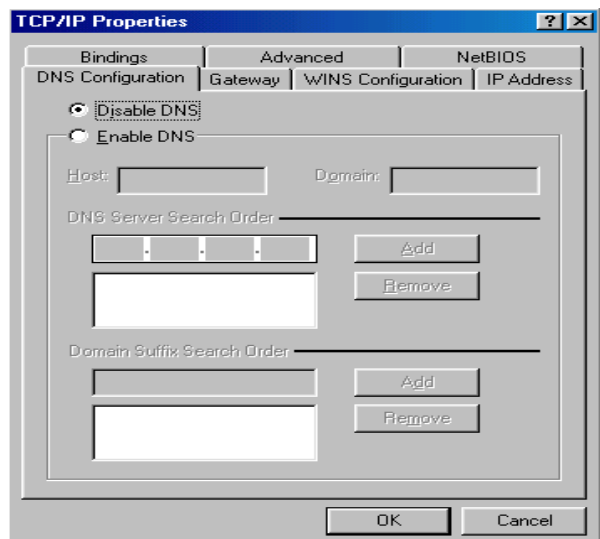
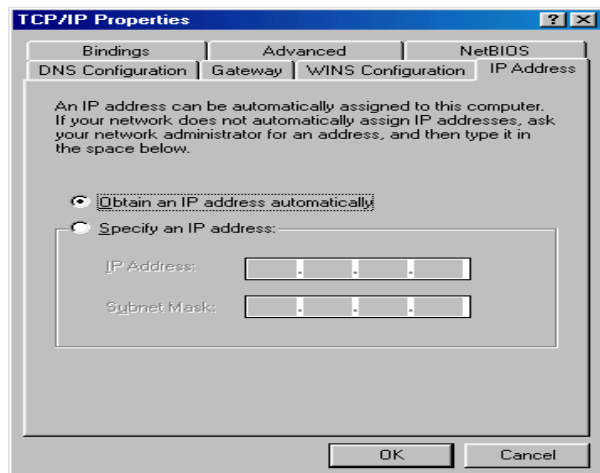
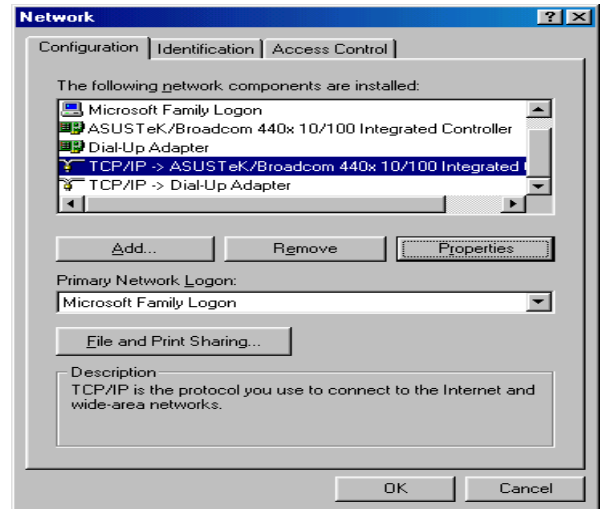
Configuring PC in Windows 2000

1. Go to **Start / Settings / Control Panel**. In the Control Panel, double-click on **Network and Dial-up Connections**.
2. Double-click **Local Area Connection**.
3. In the **Local Area Connection Status** window click **Properties**.
4. Select **Internet Protocol (TCP/IP)** and click **Properties**.
5. Select the **Obtain an IP address automatically** and the **Obtain DNS server address automatically** radio buttons.
6. Click **OK** to finish the configuration.



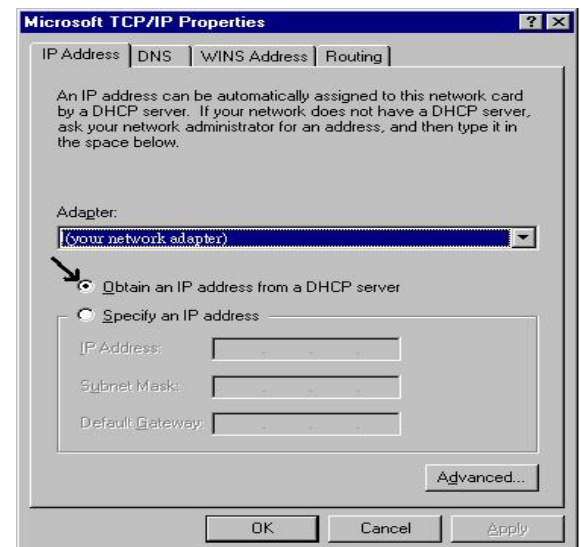
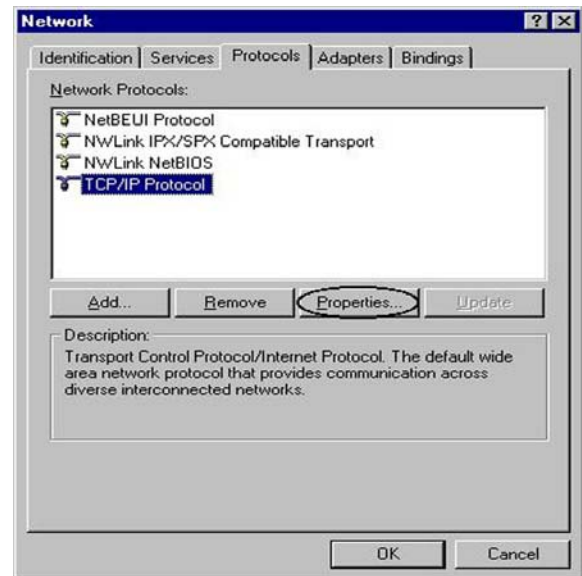
Configuring PC in Windows 98/Me

1. Go to **Start / Settings / Control Panel**. In the Control Panel, double-click on **Network** and choose the **Configuration** tab.
2. Select **TCP/IP -> NE2000 Compatible**, or the name of your Network Interface Card (NIC) in your PC.
3. Select the **Obtain an IP address automatically** radio button.
4. Then select the **DNS Configuration** tab.
5. Select the **Disable DNS** radio button and click **OK** to finish the configuration.



Configuring PC in Windows NT4.0

1. Go to **Start / Settings / Control Panel**. In the Control Panel, double-click on **Network** and choose the **Protocols** tab.
2. Select **TCP/IP Protocol** and click **Properties**.
3. Select the **Obtain an IP address from a DHCP server** radio button and click **OK**.



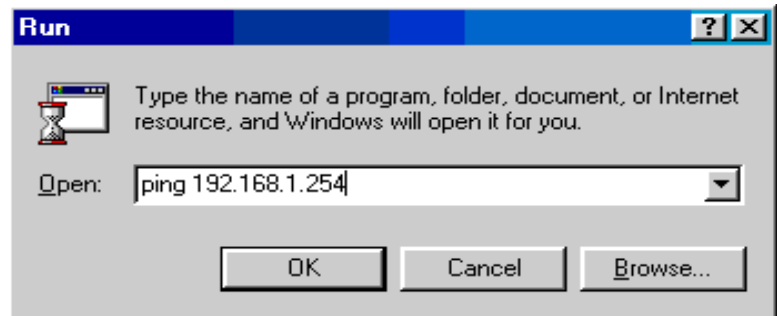
Configuring Your ADSL Router



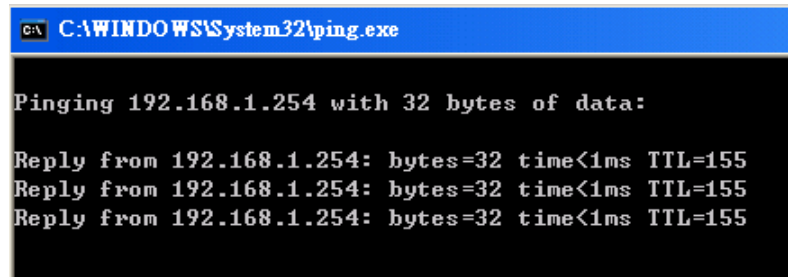
To configure this device, you must have IE 5.0 / Netscape 4.5 or above installed

■ Verifying Your Local Network Connection with the Device

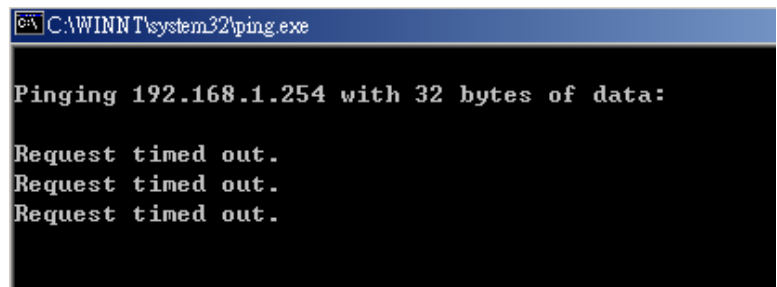
To see if this ADSL Router is visible on the local network, go to **Start / Run**. In the Run dialog box, type “**ping 192.168.1.254**” then press **OK**.



A command prompt window will pop out. If your ping is successful which means your local network is able to reach to the device, then the command prompt window will close up automatically.

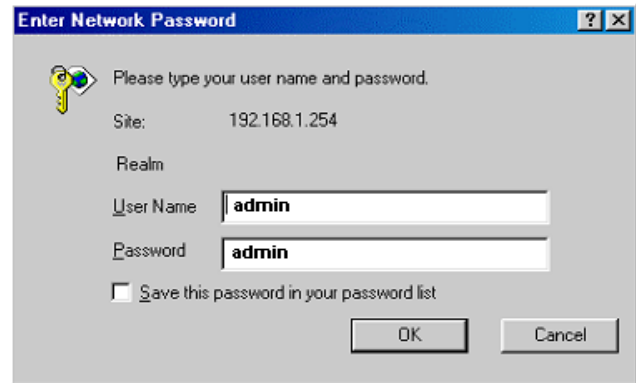
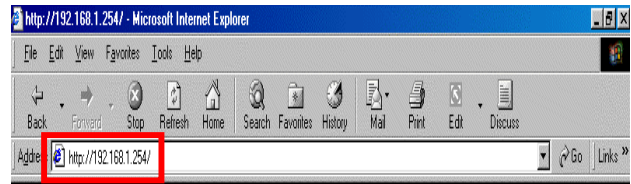


Connection fails, when you see “**Request timed out**” in the command prompt window. You may need to check your set up.

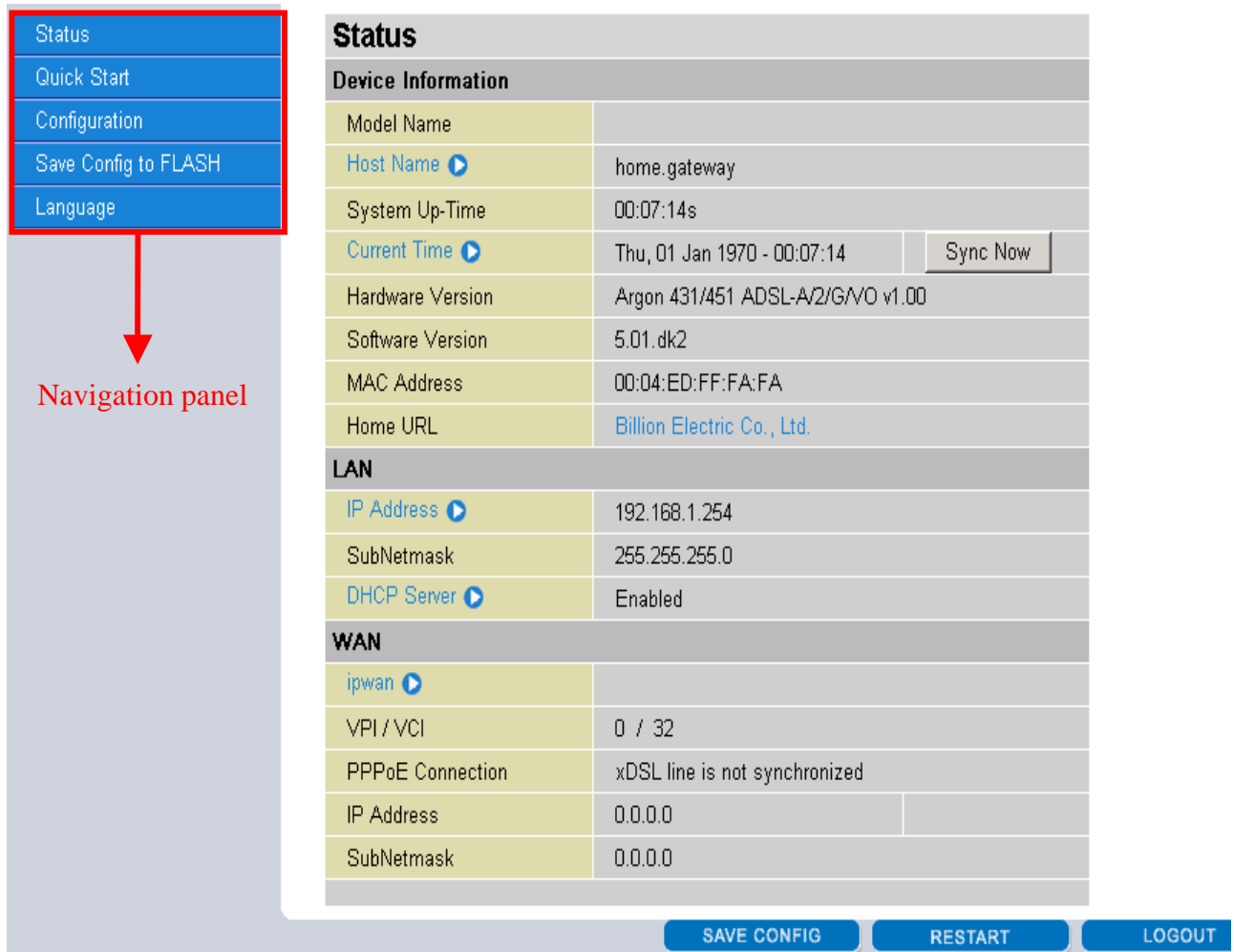


■ Connecting to the Router

1. Open the web browser and type <http://192.168.1.254> in the browser's address box. This number is the default IP address for this router. Press **Enter**.
2. A username and password window will appear. **The default username and password are admin and admin.** Press **OK** to proceed.



3. You will get a status report web page and main menu screen.



Navigation panel

Status	
Device Information	
Model Name	
Host Name	home.gateway
System Up-Time	00:07:14s
Current Time	Thu, 01 Jan 1970 - 00:07:14 Sync Now
Hardware Version	Argon 431/451 ADSL-A2/GVO v1.00
Software Version	5.01.dk2
MAC Address	00:04:ED:FF:FA:FA
Home URL	Billion Electric Co., Ltd.
LAN	
IP Address	192.168.1.254
SubNetmask	255.255.255.0
DHCP Server	Enabled
WAN	
ipwan	
VPI / VCI	0 / 32
PPPoE Connection	xDSL line is not synchronized
IP Address	0.0.0.0
SubNetmask	0.0.0.0

SAVE CONFIG **RESTART** **LOGOUT**

At the main menu screen, the left navigation panel where bookmarks are provided links you directly to the desired setup page, including:

- **Status** (ARP Table, Wireless Association Table (Wireless router only), Routing Table, DHCP Table, Email Status, VoIP Status, Event Log, Error Log, NAT Sessions, Diagnostic and UPnP Portmap)
- **Quick Start**
- **Configuration** (LAN, WAN, System, Firewall, VoIP, QoS, Virtual Server, Time Schedule and Advanced)
- **Save Config to FLASH**
- **Language** (provides user interface in English and French languages).

Please see the relevant sections of on-line manual for detailed instructions on how to configure your router.

Product Support and Contact Information

Most problems can be solved by referring to the **Troubleshooting** section in the User's Manual. If you cannot resolve the problem with the **Troubleshooting** chapter, please contact the dealer where you purchased this product.

Contact Billion

AUSTRALIA

<http://www.billion.com.au>

©2006 Billion Electric Co Ltd., PC Range P/L. All Rights Reserved.

WORLDWIDE

<http://www.billion.com/>

Mac OS is a registered Trademark of Apple Computer, Inc.
Windows 98, Windows NT, Windows 2000, Windows Me and Windows XP are registered Trademarks of Microsoft Corporation.