



NetComm V85 Sample Configurations



Revision History

Date	Revision	Description
November 2005	1.0	First Draft

Table of Contents

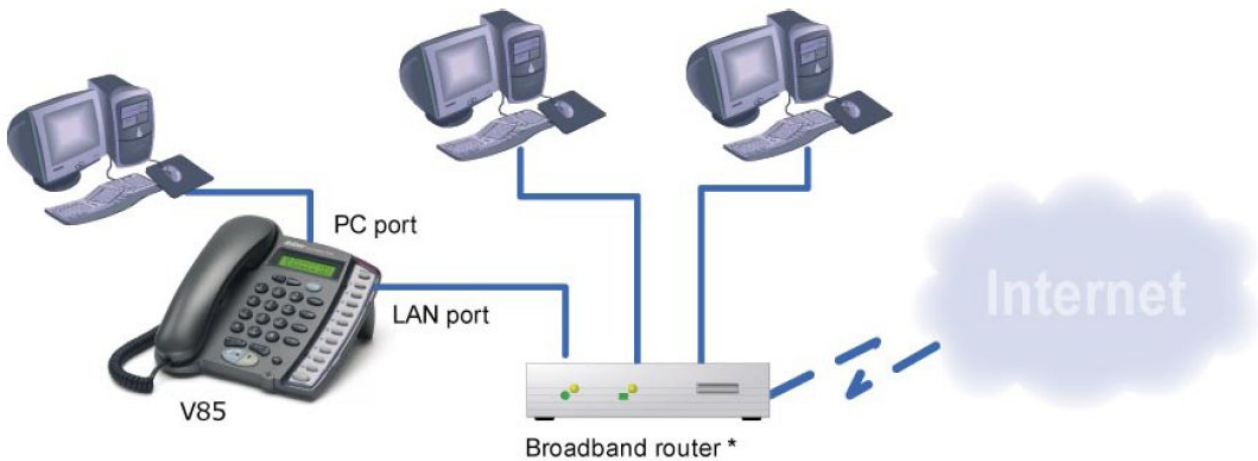
1	Introduction.....	1
2	Getting start.....	1
2.1	Typical Installation Environment.....	1
2.2	Getting the V85 up and running.....	1
3	SIP.....	2
3.1	SIP → Parameters.....	2
3.2	SIP → Advanced.....	3
4	Phone → Voice.....	3
5	System.....	3

1 Introduction

This document gives a basic sample configuration of NetComm V85 when using MyNetFone Service.

2 Getting start

2.1 Typical Installation Environment



Note: The Broadband router in this diagram could be a ADSL router or Cable modem + a router when ADSL and Cable Internet service is used respectively in real world

2.2 Getting the V85 up and running

- ✧ Step 1 Power on the V85
- ✧ Step 2 Power on your PC
- ✧ Step 3 Check the V85 IP address

In the 'typical' environment the broadband router will assign IP addresses to the V85.

To locate the V85's IP address:

[MENU/OK](#) ► [View](#) ► [Network Value](#) ► [IP Address](#)

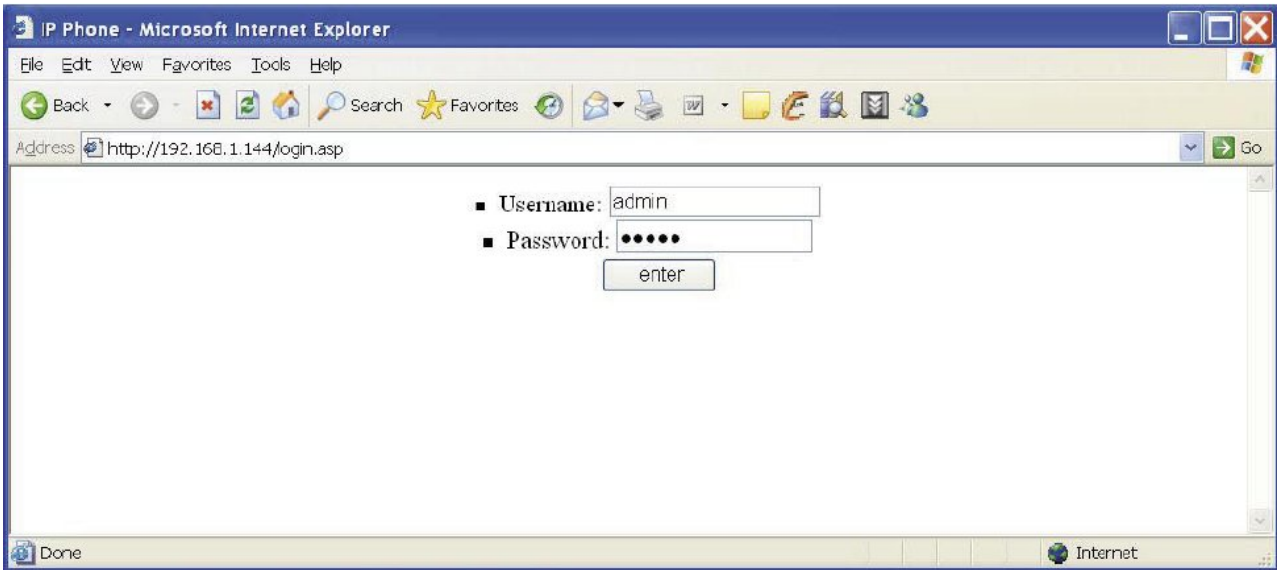
Write down the IP address shown in the V85 LCD screen which is the IP address that has been assigned to the V85 by the router:

V85 IP Address:

NOTE: If a "DHCP fail" error message is shown on your V85 LCD screen, your installation may not be 'typical' and a fixed IP address maybe required; see the Further Network Configuration Options section in Chapter 4 for details on assigning a fixed IP address. If this error message is not shown, proceed to the next.

- ✧ Step 4 Connecting to the V85 Configuration Page on your PC

Open your Web browser and enter the IP address of the V85 [found in Step c)] in the Address Bar. You will see the following login window. Type "admin" for both Username and Password and click Enter.



3 SIP

3.1 SIP → Parameters

SIP



Overview

Network

SIP

Phone

System

■ Sip Parameters:

1. Phone Number: 09XXXXXX ← MyNetFone Number/SIP Alias
2. Password: [masked] ← SIP Token / Password
3. Auth. ID: 09XXXXXX
4. SIP Domain Name: sip01.mynetfone.com
5. Local Port: 5060
6. Proxy On:
7. Proxy Addr: sip01.mynetfone.com
8. Proxy Port: 5060
9. OutbndProxy:
10. OutbndProxyIP: sip01.mynetfone.com
11. OutbndProxyPrt: 5060
12. STUN Server:
13. STUN Address: []
14. STUN Server Port: 3478
15. Port Forwarding Support:
16. NAT WAN IP Addr: []

It is a sample setting, fill according to your confirmation e-mail.

3.2 SIP → Advanced

■ **Advanced:**

- 1. Reg Expire:
- 2. RTP Port:
- 3. Codec: G711u G711a G729 G723
- 4. RTP Packet Interval: 20ms 40ms

4 Phone → Voice

Phone



Overview
Network
SIP
Phone
System

■ **Voice:**

- 1. Ring Volume(0-9):
- 2. Handset Volume(0-9):
- 3. Handfree Volume(0-9):
- 4. CodecTxGain(0-9):
- 5. Ring Type: Type 1 Type 2 Type 3 Type 4 Type 5 Type 6 Type 7 Type 8 Type 9 Type 10
- 6. DTMF Relay: RFC2833 INFO Inband
- 7. DTMF Payload Type:

■ **Others:**

- 1. VAD:
- 2. BG Noise Level(0-9):

5 System

Please click **Reboot** button after you finished the configuration.

System

NetComm®

- Upgrade:
 1. FTP Server IP:
 2. ImageFile Name:
- Change Keypad Password:
 1. Keypad Password:
 2. Confirm Password:
- Change Web Username & Password:
 1. Username:
 2. Password:
 3. Confirm Password:

The LCD Screen of V85 should shows which like this after reboot:

SIP(09XXXXXX)
Nov 15 16:17