

## CONNECTING THE VMNF300 TO BIGPOND CABLE (USING THE BIGPOND BROADBAND CABLE LOGIN ON A PC)

### 1. Confirm that you have the latest Bigpond Broadband Cable Login installed

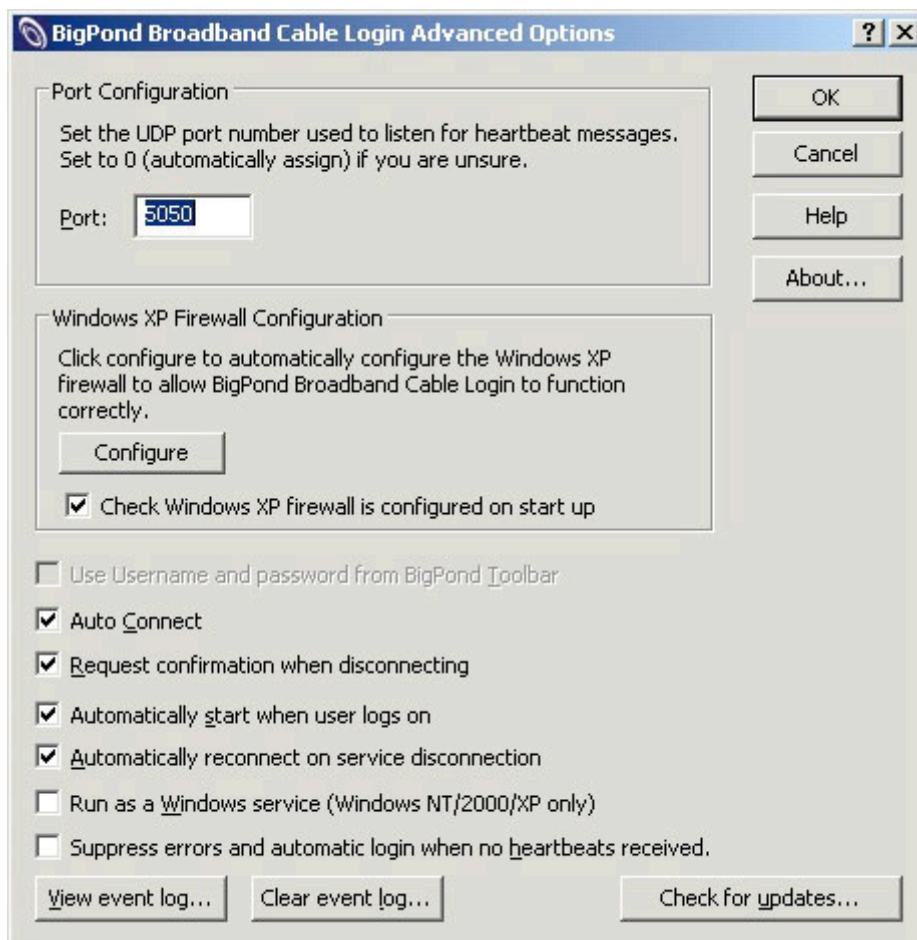
- 1.1. Please visit [http://bigpond.custhelp.com/cgi-bin/bigpond.cfg/php/enduser/std\\_adp.php?display=content&p\\_page=1&p\\_faqid=5637&p\\_Platform=N](http://bigpond.custhelp.com/cgi-bin/bigpond.cfg/php/enduser/std_adp.php?display=content&p_page=1&p_faqid=5637&p_Platform=N) to download the latest version.
- 1.2. If you are able to login successfully and can access the Internet continue with the next step.

### 2. Connect the VMNF300 between your computer and cable modem

- 2.1. Turn off your computer and cable modem.
- 2.2. Locate the Ethernet cable that connects your computer to the cable modem. Disconnect this cable from your computer.
- 2.3. Insert the free end of the Ethernet cable into the **WAN** port of the VMNF300.
- 2.4. Insert one end of the Ethernet cable supplied with the VMNF300 into the **LAN1** port of the VMNF300, and the other end into the Ethernet port on your computer.
- 2.5. Connect a telephone into the VMNF300 phone port.
- 2.6. Power on the cable modem and wait two minutes for it to start up.
- 2.7. Power on your computer.

### 3. Configuration of the Bigpond Broadband Cable Login

- 3.1. Right click on the Bigpond Broadband Cable Login icon in your system tray, select **Options** from the menu here.
- 3.2. Click on **Advanced**.
- 3.3. Set the options as shown in the diagram below, ensuring the port is set to **5050**.



- 3.4. Click **OK**.

**4. Set a static IP address on the computer**

- 4.1. On your computer, go to **Control Panel**, then go to **Network Connections**.
- 4.2. Right click on the **Local Area Network Connection**, and select **Properties**.
- 4.3. Highlight **Internet Protocol (TCP/IP)** on this screen. Click on **Properties**.
- 4.4. Enter the information shown below.

The screenshot shows the 'Internet Protocol (TCP/IP) Properties' dialog box with the 'General' tab selected. The dialog box contains the following information:

**General**

You can get IP settings assigned automatically if your network supports this capability. Otherwise, you need to ask your network administrator for the appropriate IP settings.

Obtain an IP address automatically

Use the following IP address:

IP address:	192 . 168 . 30 . 2
Subnet mask:	255 . 255 . 255 . 0
Default gateway:	192 . 168 . 30 . 1

Obtain DNS server address automatically

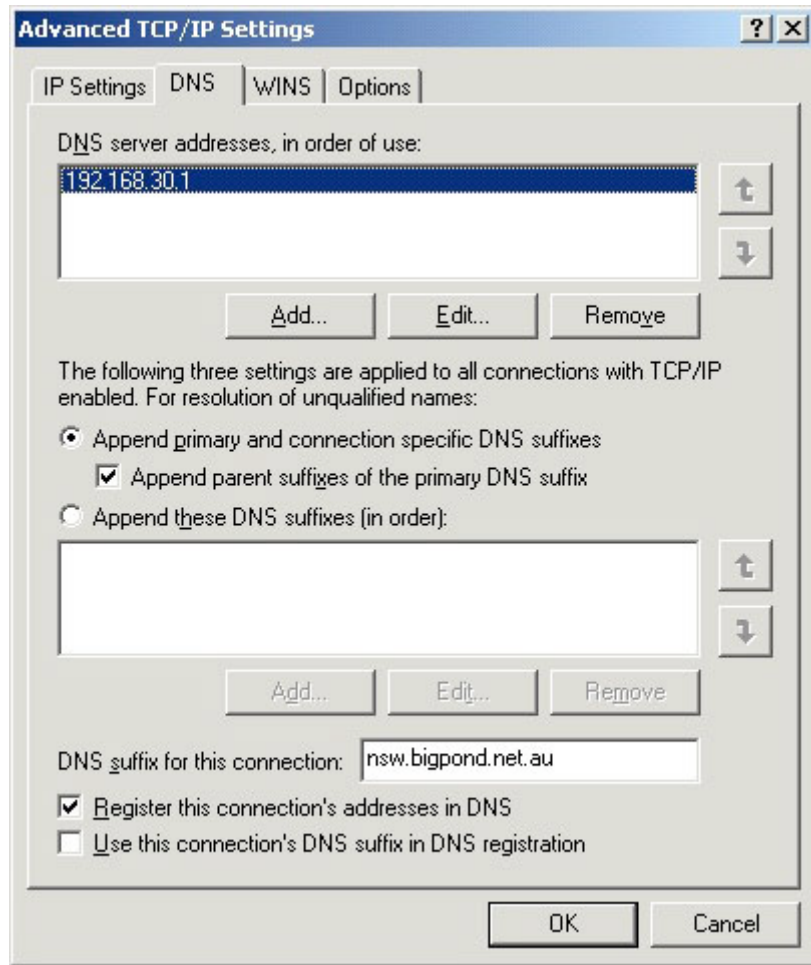
Use the following DNS server addresses:

Preferred DNS server:	192 . 168 . 30 . 1
Alternate DNS server:	. . .

Advanced...

OK Cancel

- 4.5. Click on **Advanced** and select the **DNS** tab.
- 4.6. Add the DNS suffix for you state according to the diagram and table below.



State	DNS Suffix
Queensland	qld.bigpond.net.au
New South Wales	nsw.bigpond.net.au
Victoria	vic.bigpond.net.au
South Australia	sa.bigpond.net.au
Western Australia	wa.bigpond.net.au

4.7. Click **OK** and then **OK** again to apply these settings.

**5. Install the VMNF300 VoIP Telephone Adaptor/Router**

- 5.1. Plug the power cable into the VMNF300 power port, and plug in the power adapter.
- 5.2. Check the power light on the VMNF300 is illuminated. Wait at least five minutes for the phone adapter to start up.
- 5.3. Turn on your computer.

**6. Configuration of the VMNF300 for Telstra Cable**

- 6.1. Open a web browser such as Internet Explorer or Firefox, and connect to the VMNF300 using the URL <http://192.168.30.1/>
- 6.2. A login window will be displayed. Enter the username **admin** and the password **admin**. Click on the **OK** button.
- 6.3. Click on **WAN Setup** in the menu on the left, and verify that the default settings are used. **WAN Mode** should be **DHCP mode**.

**7. Configuration of the VMNF300 to forward Bigpond Cable heartbeats**

- 7.1. Click on **NAT Port Forwarding** and enter the details shown in the diagram below. If you set a different IP address above, use this address instead.

**Port Forwarding Configuration**

Public Port From: 5050  
 Public Port To: 5050  
 Protocol: udp  
 Local Address: 192.168.30.2  
 Local Port From: 5050  
 Local Port To: 5050

Apply Cancel

7.2. Apply this by clicking on the **Apply** button.

**List of Port Forwarding Entries**

Select	Public Port		Protocol	Local Address	Local Port	
	From	To			From	To
<input type="radio"/>	5060	N/A	udp	60.225.68.6	5060	N/A
<input type="radio"/>	16384	16391	udp	60.225.68.6	16384	16391
<input type="radio"/>	5050	N/A	udp	192.168.30.2	5050	N/A

Add Delete

**8. Connecting to the Internet**

- 8.1. Open the Bigpond Broadband Cable Login on the computer and select **Connect**.
- 8.2. After you are connected, remove power from the VMNF300 for 30 seconds. Leave your modem and computer on.
- 8.3. Then apply power to the VMNF300.
- 8.4. Check the power light on the telephone adapter is illuminated. Wait at least five minutes for the phone adapter to start up.

You should now have a connection to the Internet via the VMNF300. Verify that all is well by checking your email or visiting websites.